



SPLASHLIGHT

STUDIOS

**UNIQUE SPACES,
ENDLESS OPPORTUNITIES**

MARCH 2024

Located at 75 Varick street in the renowned One Hudson Square building, Splashlight's 60,000 square foot headquarters is perfectly situated near Soho, Tribeca and the West Village.

It's easily accessible by the A,C,E and 1 lines to Canal Street, and its downtown location makes it convenient to both NJ and Brooklyn as well as NYC.

Plus, the neighborhood features some of the best restaurants, bars and hotels the city has to offer.

SPLASHLIGHT STUDIOS

75 VARICK 3RD FLR
NEW YORK, NY 10013

212.268.7247

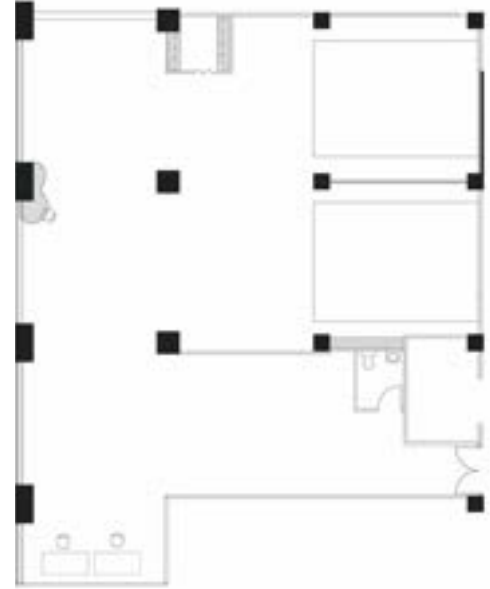
SPLASHLIGHT.COM



HYBRID



- + 13' Ceiling Height
- + 4,000 Sq. Ft.
- + Power: 5x 100A/125V
- + 2 x Cycloramas: 16' W x 22' L Each
- + Northern Daylight Exposure
- + Hair & Makeup Stations
- + Dining & Catering Area
- + Designer Lounge Area
- + Private Restroom
- + High-Speed Internet
- + Floor: Polished Concrete
- + Freight Elevator Access
- + 24/7 Private Loading Dock On Watts St



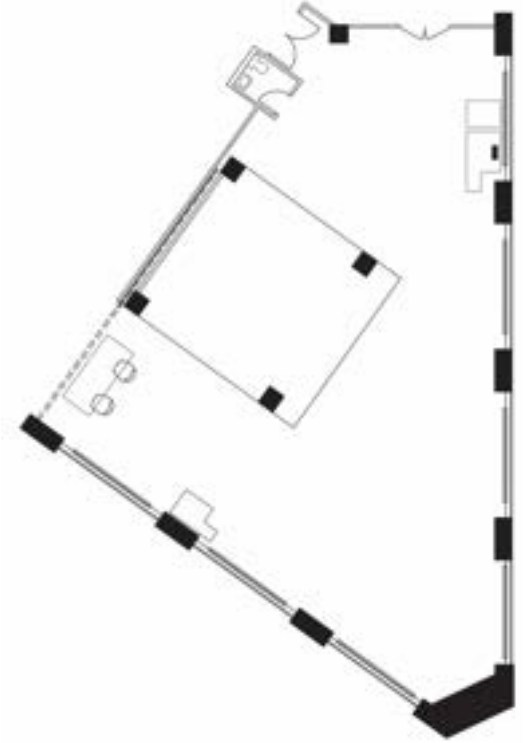
FOR MORE INFORMATION, CONTACT TAYLOR HINGSTON (THINGSTON@SPLASHLIGHT.COM)

SPLASHLIGHT
STUDIOS

DOUBLE EXPOSURE



- + 13' Ceiling Height
- + 3,000 Square Feet
- + Power: 200 Amps 3 Phase
- + Full Infinity CYC: 22' wide x 24' long
- + Southern & Eastern Daylight Exposure
- + Private Bathroom
- + Hair & Makeup Station
- + Dining & Catering Area
- + Designer Lounge Area
- + Blackout Blinds
- + Built-in Sound System & High Speed Internet
- + Floor: Polished Concrete
- + Freight Elevator Access
- + 24/7 Private Loading Dock on Watts St.



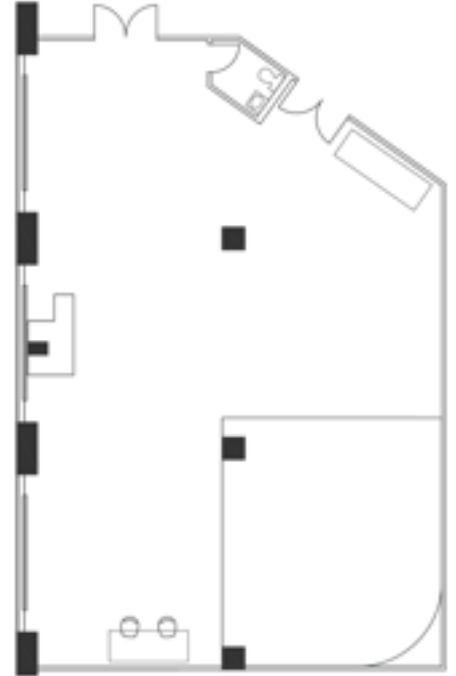
FOR MORE INFORMATION, CONTACT TAYLOR HINGSTON (THINGSTON@SPLASHLIGHT.COM)

SPLASHLIGHT
STUDIOS

COVE



- + 13' Ceiling Height
- + 2,400 Square Feet
- + Power: 4x 100A/125V (400 Amps Total)
- + Full Infinity Corner Cyc Dimensions: 19' wide x 21' long
- + Eastern Daylight Exposure
- + Private Bathroom In Studio
- + Hair & Makeup Station
- + Dining & Catering Area
- + Designer Lounge Area
- + Blackout Blinds
- + Built-In Sound System & High-Speed Internet
- + Floor: Polished Concrete
- + Freight Elevator Access
- + 24/7 Private Loading Dock On Watts St.



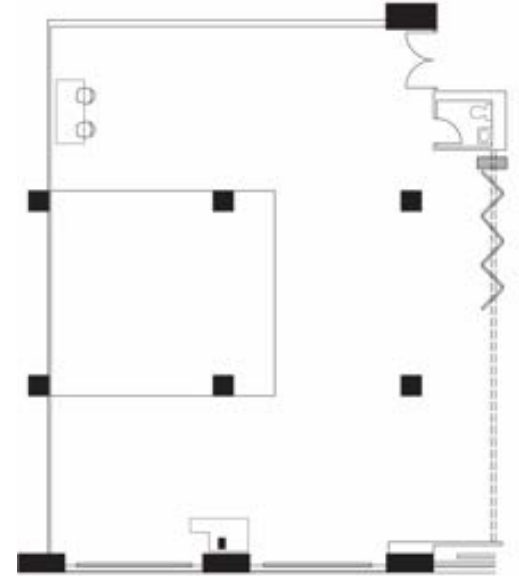
FOR MORE INFORMATION, CONTACT TAYLOR HINGSTON (THINGSTON@SPLASHLIGHT.COM)

SPLASHLIGHT
STUDIOS

RUNWAY ONE



- + 13' Ceiling Height
- + 2,500 Square Feet
- + Power: 200 Amps 3 Phase
- + Full Infinity CYC: 22' wide x 24' long
- + Southern Daylight Exposure
- + Private Bathroom
- + Hair & Makeup Station
- + Dining & Catering Area
- + Designer Lounge Area
- + Blackout Blinds
- + Built-in Sound System & High Speed Internet
- + Floor: Polished Concrete
- + Freight Elevator Access
- + 24/7 Private Loading Dock on Watts St.



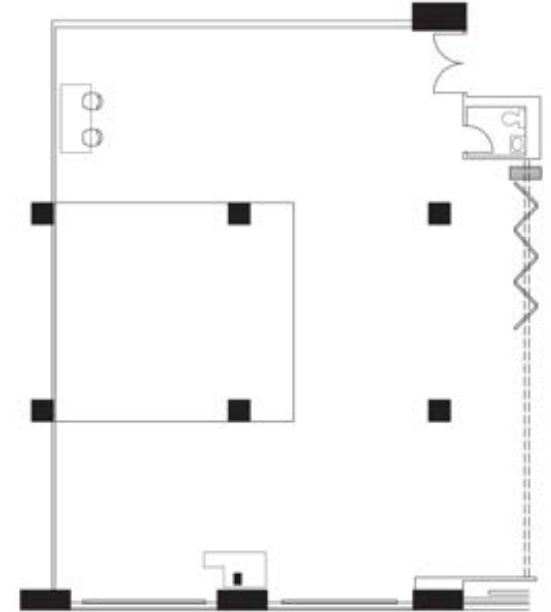
FOR MORE INFORMATION, CONTACT TAYLOR HINGSTON (THINGSTON@SPLASHLIGHT.COM)

SPLASHLIGHT
STUDIOS

RUNWAY TWO



- + 13' Ceiling Height
- + 2,800 Square Feet
- + Power: 200 Amps 3 Phase
- + Full Infinity CYC: 22' wide x 24' long
- + Southern Daylight Exposure
- + Private Bathroom
- + Hair & Makeup Station
- + Dining & Catering Area
- + Designer Lounge Area
- + Blackout Blinds
- + Built-in Sound System & High Speed Internet
- + Floor: Polished Concrete
- + Freight Elevator Access
- + 24/7 Private Loading Dock on Watts St.

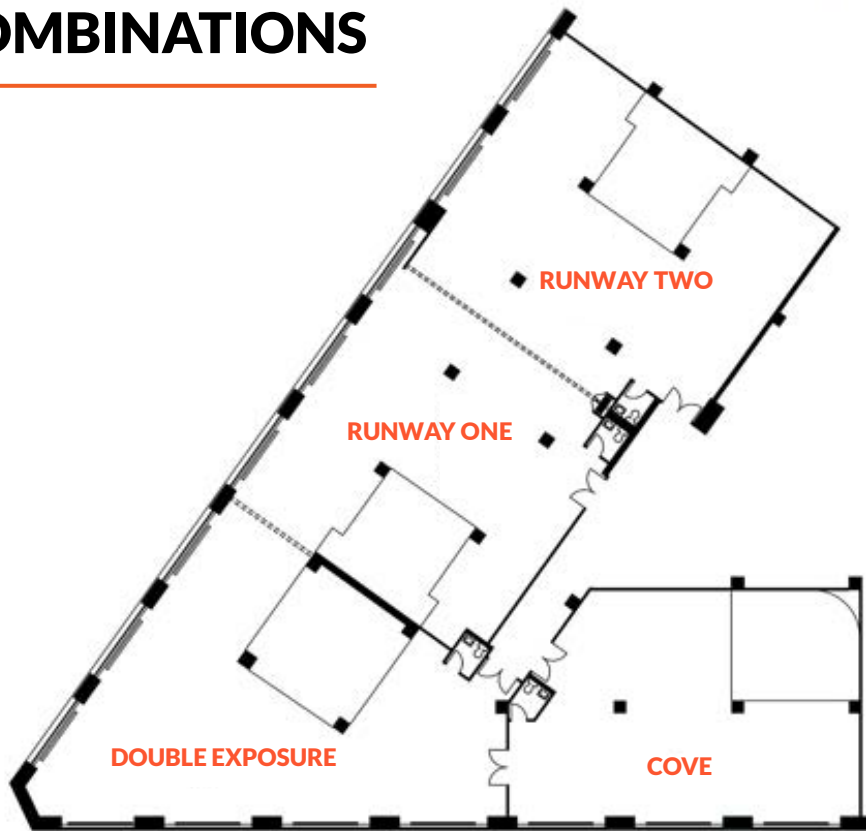


FOR MORE INFORMATION, CONTACT TAYLOR HINGSTON (THINGSTON@SPLASHLIGHT.COM)

SPLASHLIGHT
STUDIOS

SPLASHLIGHT STUDIOS

STUDIO COMBINATIONS



RUNWAY ONE & TWO
5,300 sq. ft.

DOUBLE EXPOSURE & COVE
5,400 sq.ft.

**DOUBLE EXPOSURE &
RUNWAY ONE**
5,500 sq.ft.

**COVE, DOUBLE EXPOSURE,
RUNWAY ONE**
7,900 sq.ft.

**DOUBLE EXPOSURE,
RUNWAY ONE & TWO**
8,300 sq. ft.

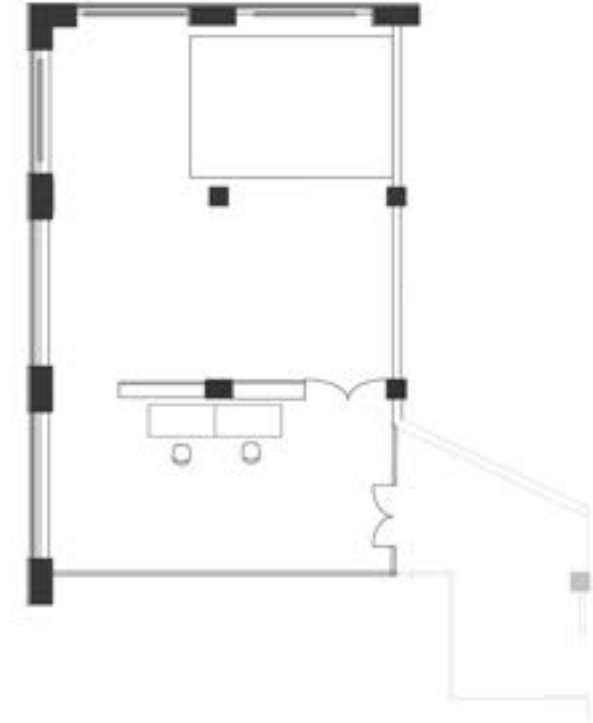
**COVE, DOUBLE EXPOSURE,
RUNWAY ONE & TWO**
10,700 sq.ft.

FOR MORE INFORMATION, CONTACT TAYLOR HINGSTON (THINGSTON@SPLASHLIGHT.COM)

APERTURE



- + 13' Ceiling Height
- + 2,300 Sq. Ft.
- + Power: 100 Amps 3 Phase
- + Cyclorama
- + Double Exposure Windows With City Views
- + Northern & Eastern Daylight Exposure
- + Hair & Makeup Stations
- + Dining & Catering Area
- + Designer Lounge Area
- + High-Speed Internet
- + Floor: Polished Concrete
- + Freight Elevator Access
- + 24/7 Private Loading Dock On Watts St

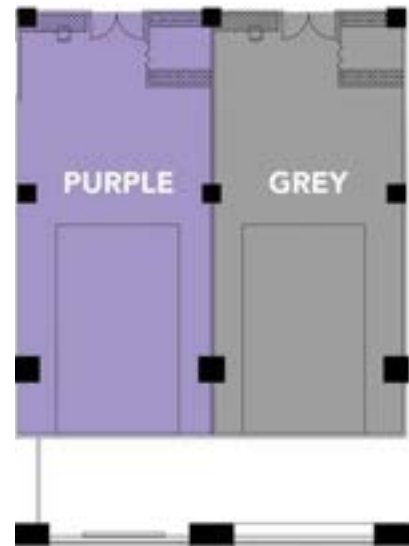


FOR MORE INFORMATION, CONTACT TAYLOR HINGSTON (THINGSTON@SPLASHLIGHT.COM)

SPLASHLIGHT
STUDIOS

WHETHER YOU'RE LOOKING TO SHOOT A SMALL PASSION PROJECT OR A HIGH-PROFILE EDITORIAL, RENT THESE SPACES INDIVIDUALLY OR MIX-AND-MATCH TO PERFECTLY FIT YOUR NEEDS.

PIXEL



FOR MORE INFORMATION, CONTACT TAYLOR HINGSTON (THINGSTON@SPLASHLIGHT.COM)

SPLASHLIGHT
STUDIOS

PIXEL STUDIO

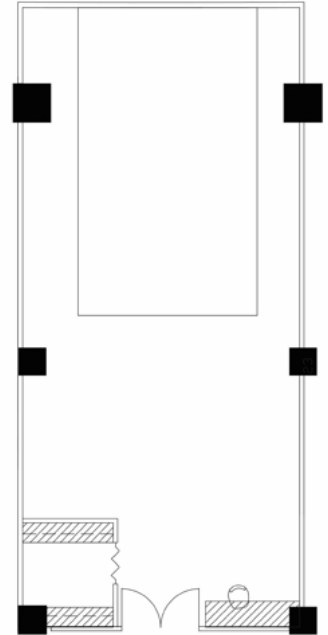


PER STUDIO AMENITIES:

- + 12' ceiling height
- + 1,000 Plus Square Feet of Shooting Space
- + Power: (2) 100 Amps Single Phase
- + Full Infinity CYC: 16' W x 22' L
- + Private Entrance
- + Hair and Makeup Station
- + Private Dressing Room
- + Floor: Polished Concrete
- + Built-in Sound System & High Speed Internet
- + Blackout Capability
- + Freight Elevator Access
- + 24/7 Private Loading Dock on Watts St.

SELECT AMENITIES:

- + Pixel: Red, Orange & Yellow can be combined for a total of 6,000 sq. ft.
- + Pixel: Grey & Purple can be combined for a total of 2,000 sq. ft.
- + Southern Daylight Exposure
- + Private Bathrooms
- + Connected Production Space

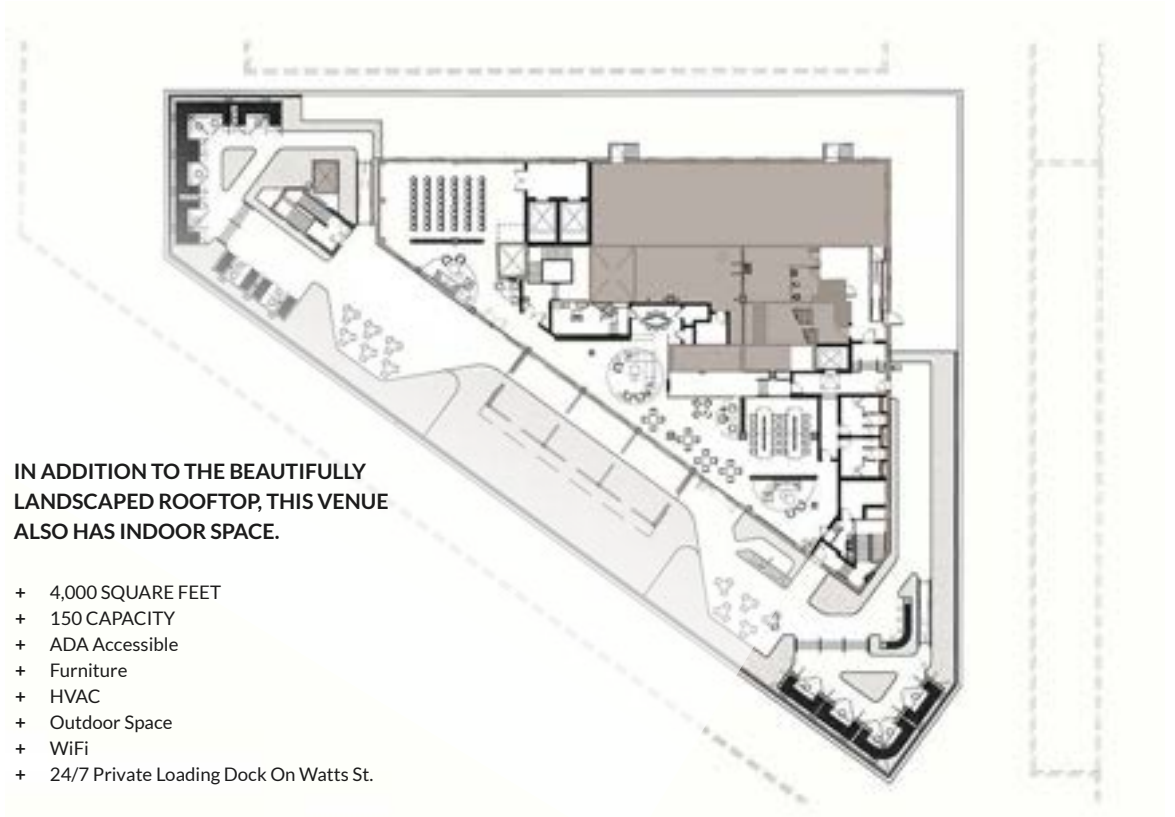


FOR MORE INFORMATION, CONTACT TAYLOR HINGSTON (THINGSTON@SPLASHLIGHT.COM)

SPLASHLIGHT
STUDIOS

THE ROOFTOP AT SPLASHLIGHT OFFERS PRIME VIEWS OF DOWNTOWN MANHATTAN, THE HUDSON RIVER, AND TRIBECA.

PANORAMIC ROOF



IN ADDITION TO THE BEAUTIFULLY LANDSCAPED ROOFTOP, THIS VENUE ALSO HAS INDOOR SPACE.

- + 4,000 SQUARE FEET
- + 150 CAPACITY
- + ADA Accessible
- + Furniture
- + HVAC
- + Outdoor Space
- + WiFi
- + 24/7 Private Loading Dock On Watts St.

FOR MORE INFORMATION, CONTACT TAYLOR HINGSTON (THINGSTON@SPLASHLIGHT.COM)

SPLASHLIGHT
STUDIOS

PANORAMIC ROOF



FOR MORE INFORMATION, CONTACT TAYLOR HINGSTON (THINGSTON@SPLASHLIGHT.COM)

SPLASHLIGHT
STUDIOS



EQUIPMENT *RENTAL*

Splashlight Studios serves as a one-stop resource for all your Photo, Video, Digital, + Production EQ rentals.

With an industry leading inventory we can support any size project whether it be In-Studio or On-Location.

Our experienced team of In-House Technicians, Creatives, + Crew offer unparalleled services and support.

We love to Collaborate, on-set crew assistance available in Styling, H+MU, Photo/Video + Digital Techs.

ARRI®

Profoto

BRIESE CHARTERING

broncolor

m

elinchrom+

KINO FLO
lighting systems

Apple

Canon Nikon SONY

Mamiya

HASSELBLAD

EIZO

PHASEONE

INOVATIV

AUDIO + DIGITAL + ELECTRIC + EXPENDABLES + GRIP + LIGHTING + PRODUCTION + SET

IN-HOUSE

RESTAURANT AND CATERING

Splashlight Studios offers a range of Catering choices for your next Shoot or Event.

Packages including breakfast, lunch, craft service and beverages are all available.

Vegan, gluten free, dairy free, vegetarian and non vegetarian menus are available and we are always happy to accommodate any dietary restrictions or special requests.

Please contact us to view our updated menus and receive a custom quote.



FOR MORE INFORMATION, CONTACT TAYLOR HINGSTON (THINGSTON@SPLASHLIGHT.COM)

SPLASHLIGHT
STUDIOS

THANK YOU!

SPLASHLIGHT
STUDIOS



TAYLOR HINGSTON

SENIOR SALES EXECUTIVE

thingston@splashlight.com